



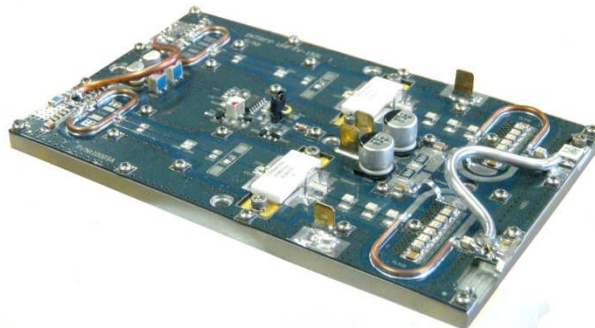
PP500-1000-200

500-1000MHz, 200 watts

Solid State Broadband

High Power Pallet Amplifier

The PP500-1000-100 is a 200W pallet amplifier for the 500-1000 MHz band. This linear Class AB pallet amplifier features Gold metalized LDMOS transistors providing typical P1dB 200watts. This pallet is excellent as an output stage, or can be used as a driver with high peak power capability. 50 Ohms input and output allows this pallet amplifier to be used as both an output PA with 200W of output power. Thermal tracking allows for superior performance in providing high gain, efficiency, and power in a small pallet footprint, making this a great choice for your broadband applications.



Specifications

(Vsupply=+32V Vdc, Idq=2.0A, T_{Base}=25°C)

| Parameter | Min. | Typ | Max. | Unit |
|---------------------------|--------------------|------|-------|-----------------|
| Frequency | 500 | | 1000 | MHz |
| Pout P1dB | 180 | 200 | | Watts |
| Gain | 10 | 11.5 | | dB |
| Power In | | | 20 | Watts |
| Drain Current | 16 | 18 | | Amps |
| Input VSWR | | | 1.5:1 | |
| Insertion Phase Variation | | ± 5 | | ° unit to unit |
| Gain Variation | | ± 1 | | dB unit to unit |
| 2 nd Harmonic | | -20 | | dBc |
| 3 rd Harmonic | | -35 | | dBc |
| Baseplate Operating Temp. | 0 | | +60 | °C |
| Size | 6.3" x 3.8" x 1.0" | | | |

Features

- 200 Watts Class AB
- 11.5 dB Gain
- Selectable internal/external Bias
- 50 Ohm in and out
- All gold LDMOS for maximum reliability

Maximum Ratings

| Parameter | Value |
|--|---------------|
| Input Voltage | +34 VDC |
| Bias Current | 3.0 Amp |
| Drain Current | 18 Amp |
| Load Mismatch | 3:1 |
| All Phase angles current limited to 18A for 3 sec. | |
| Baseplate Temp | +60°C |
| Storage Temp | -40° - +105°C |

PMT RF Products, Inc • 3107 N. Deer Run Road, Suite 20, Carson City, Nevada 89701 USA.

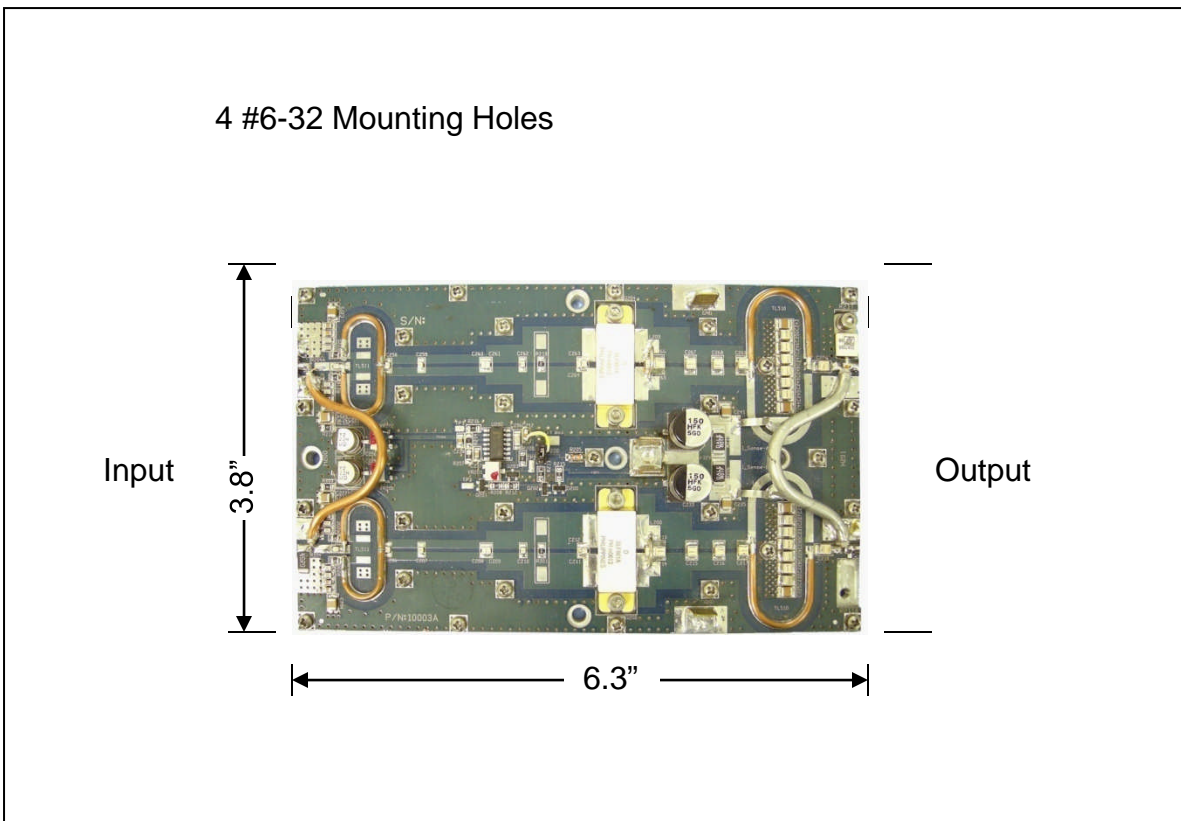
Tel: +1.775.883.1122 e-mail: sales@pmtrf.com web: <http://www.pmtrf.com>

Specifications contained herein are subject to change without notice.

PMT, Inc assumes no liability for the use of this information.

© PMT, Inc 2007

Reference Circuit



Reference circuit size (not to scale)

PMT RF Products, Inc • 3107 N. Deer Run Road, Suite 20, Carson City, Nevada 89701 USA.

Tel: +1.775.883.1122 e-mail: sales@pmtrf.com web: <http://www.pmtrf.com>

Specifications contained herein are subject to change without notice.

PMT, Inc assumes no liability for the use of this information.

© PMT, Inc 2007

