



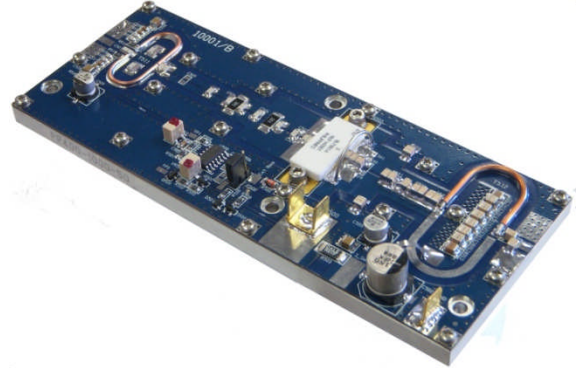
PP400-1000-100

400-1000 MHz – 100W

Solid State Broadband

High Power Pallet Amplifier

The PP400-1000-100 is a 100W pallet amplifier for the 400-1000 MHz band. This linear Class AB pallet amplifier features Gold metalized LDMOS transistors providing typical P1dB 125W. This pallet is excellent as an output stage, or can be used as a driver with high peak power capability. 50 Ohms input and output allows this pallet amplifier to be used as both an output PA with 120W of output power or as a linear 50W driver. Thermal tracking allows for superior performance in providing high gain, efficiency, and power in a small pallet footprint, making this a great choice for your broadband applications.



Specifications				
(Pout =100W, Vsupply=+28V Vdc, Idq=0.6A, T _{Base} =25°C)				
Parameter	Min	Typ	Max.	Unit
Frequency	400		1000	MHz
Pout P1dB	90	125		Watts
Gain	10	11		dB
Power In		7.9	10	Watts
Drain Current		7.1		Amps
Input R/L		-9		db
2 nd Harmonic		-30	-20	dBc
3 rd Harmonic		-35	-20	dBc
Baseplate Operating Temp.	0		+60	°C
Size	2.4"x6.0"x 0.75"			

Features

- 50 Watts Class AB, Linear
- 11 dB Gain typical
- 50 ohms input/output
- No circuit tuning or RF assembly
- Selectable internal/external Bias

Maximum Ratings	
Parameter	Value
Input Voltage	+324 VDC
Bias Current	2.0 Amp
Drain Current	11 Amp
Load Mismatch	3:1
<small>All Phase Angles, Drain Current limited to 11A, 3 sec. max.</small>	
Baseplate Temp	+60°C
Storage Temp	-40° - +105°C

Power Module Technology, • 3107 N. Deer Run Road, Suite 20, Carson City, Nevada 89701 USA.

Tel: +1.775.883.1122 e-mail: sales@pmtrf.com web: <http://www.pmtrf.com>

Specifications contained herein are subject to change without notice.

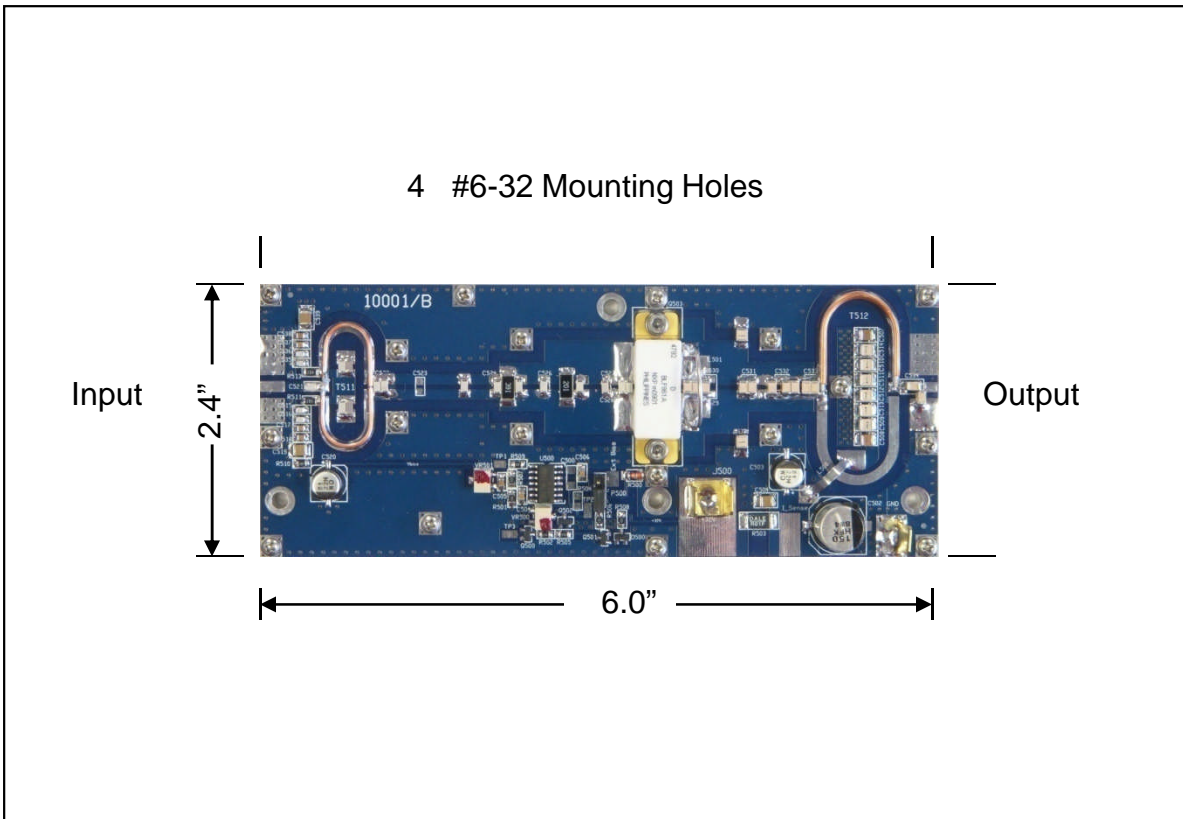
PMT assumes no liability for the use of this information.

© PMT 2008



PP400-1000-100
400-1000 MHz – 100W
Solid State Broadband
High Power Pallet Amplifier

Reference Circuit



Reference circuit size (not to scale)

Power Module Technology, • 3107 N. Deer Run Road, Suite 20, Carson City, Nevada 89701 USA.

Tel: +1.775.883.1122 e-mail: sales@pmtrf.com web: <http://www.pmtrf.com>

Specifications contained herein are subject to change without notice.

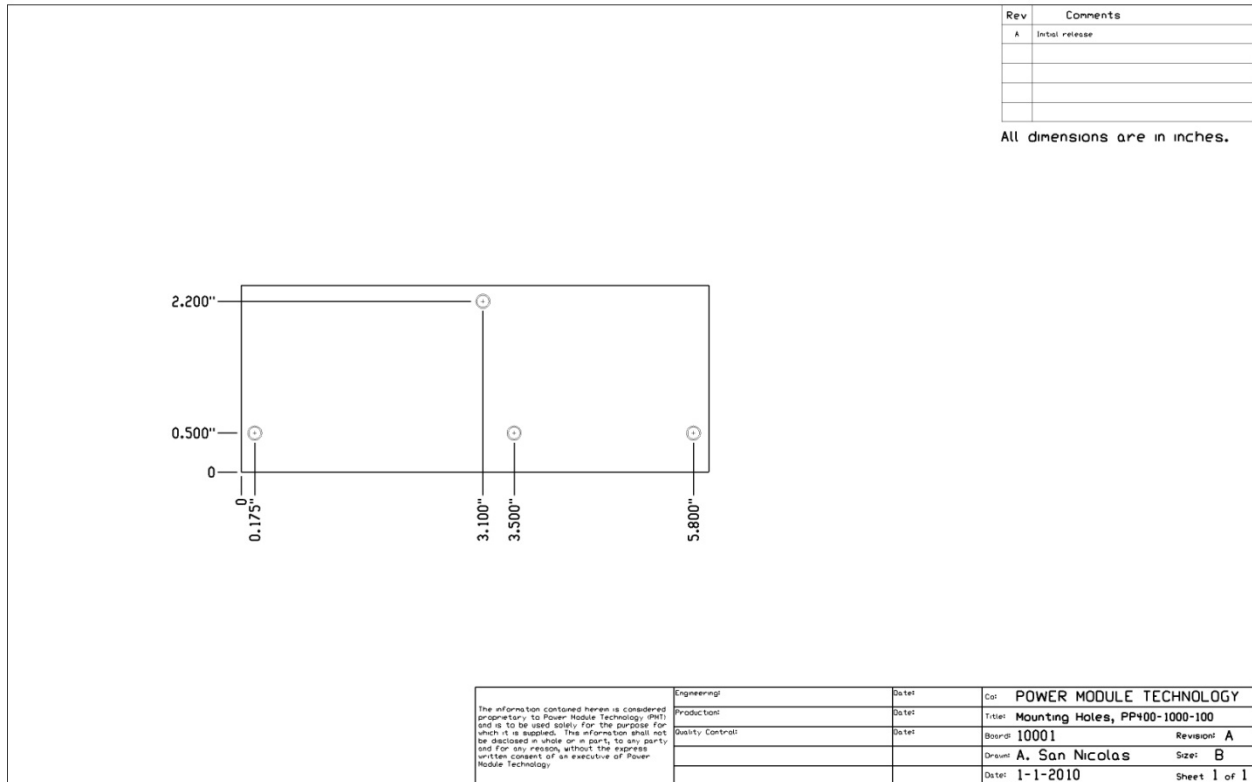
PMT assumes no liability for the use of this information.

© PMT 2008



PP400-1000-50 400-1000 MHz – 50W Solid State Broadband High Power Pallet Amplifier

Mounting Hole Locations



Power Module Technology, • 3107 N. Deer Run Road, Suite 20, Carson City, Nevada 89701 USA.

Tel: +1.775.883.1122 e-mail: sales@pmtrf.com web: <http://www.pmtrf.com>

Specifications contained herein are subject to change without notice.

PMT assumes no liability for the use of this information.

© PMT 2008



PP400-1000-100
400-1000 MHz – 100W
Solid State Broadband
High Power Pallet Amplifier

Revision History: 03/24/10 Data Sheet

We Listen to your comments
If there is any information within this document that you feel is wrong, unclear or Missing, please give us your feedback as it will help us to continuously improve The quality of this document. Please send your suggestions (including a reference To this document) to:
Bob.Todd@PMTRF.com
To request other information please call 1-775-883-1122

Attention please:

The information herein is given to describe certain components and shall not be Considered as a guarantee of characteristics. Terms of delivery and rights to Technical change reserved.

For further information on technology, delivery terms, conditions and prices, please Contact the sales department at PMT headquarters at 1-775-883-1122

Power Module Technology, • 3107 N. Deer Run Road, Suite 20, Carson City, Nevada 89701 USA.

Tel: +1.775.883.1122 e-mail: sales@pmtrf.com web: <http://www.pmtrf.com>

Specifications contained herein are subject to change without notice.

PMT assumes no liability for the use of this information.

© PMT 2008