



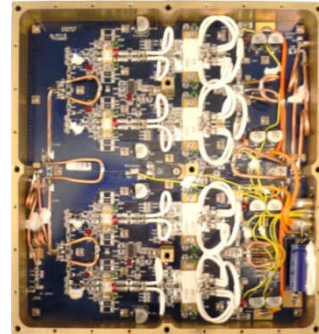
PM150-250-400

150-250 MHz – 400W

Solid State Broadband

High Power Module Amplifier

The PM150-250-400 is a 400W module amplifier for the 150-250 MHz band. Superior performance is provided offering high gain, efficiency and power footprint using advanced broadband RF matching networks, and the finest MOSFET transistors available on the market today. Matched for 50 ohms input and output, thermal tracking bias allows the PM0102-350 to operate Class AB providing 400 watts PEP making this the natural choice for your high power broadband application in the 150-250 MHz band.



Specifications (Vsupply=+28V Vdc, Idq=5.2A, TBase=25°C)				
Parameter	Min.	Typ.	Max.	Unit
Frequency	150		250	MHz
Pout CW	350	400		Watts
Gain	23	25		dB
Power In		1.3		Watts
Drain Current		27		Amps
Efficiency	47	52		%
Input Return Loss	-14	-16		dB
Op Voltage	26	28	30	Volt
2 nd Harmonic		-30		dBc
3 rd Harmonic		-20		dBc
IMD ₃ , 2 Tone 400 W PEP, Δf = 1MHz	-22			dBc
Physical Dimensions	8.4"x7.8"x1.2"			

Features

- 400 Watts typical, Class AB
- 50 ohms input/output
- Thermal tracking Bias
- 400 Watts PEP, class AB
- No circuit tuning or RF assembly

Maximum Ratings	
Parameter	Value
Input Voltage	+30 VDC
Bias Current	+10 Amp
Drain Current	35 Amp
Load Mismatch, All Phase <small>Angles, Drain Current Limited to 35A</small>	5:1
Baseplate Temp	+60°C
Storage Temp	-40° - +105°C

Power Module Technology • 3107 N. Deer Run Road, Suite 20, Carson City, Nevada 89701 USA.

Tel: +1.775.883.1122 e-mail: sales@pmtrf.com web: <http://www.pmtrf.com>

Specifications contained herein are subject to change without notice.

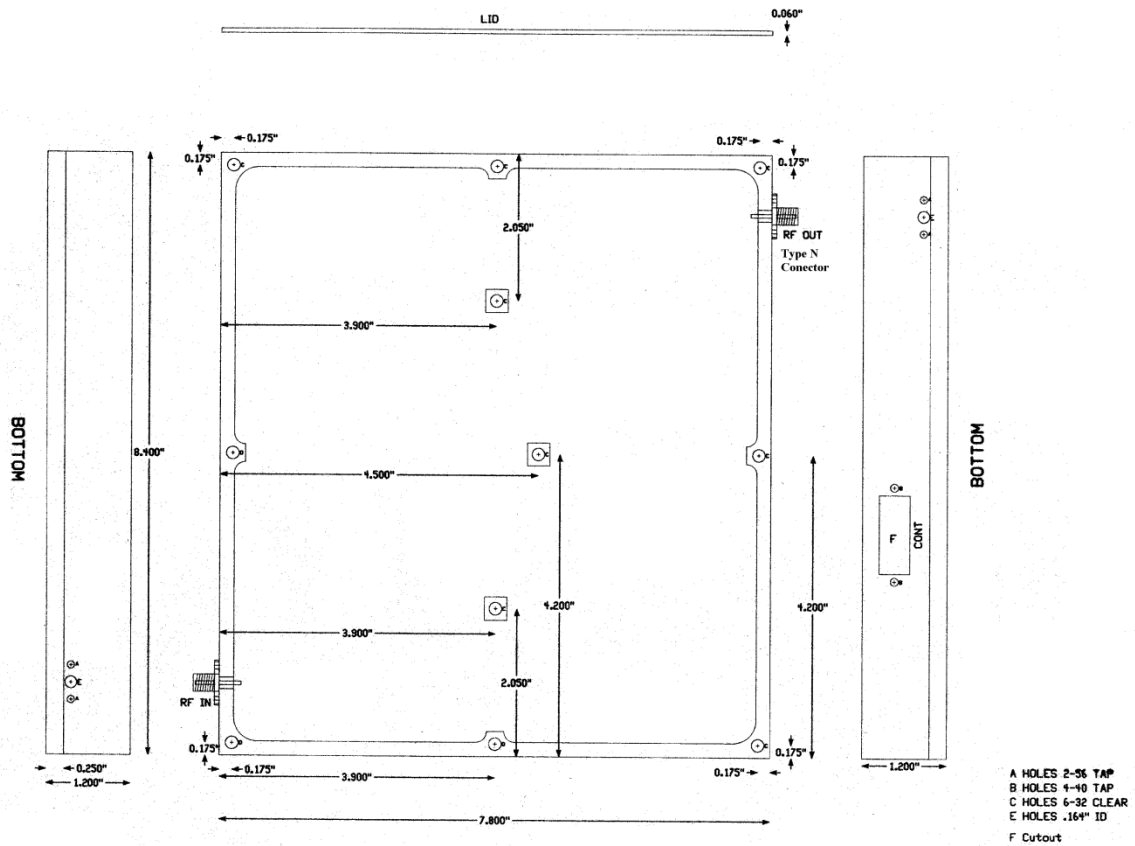
PMT, Inc assumes no liability for the use of this information.

© PMT, Inc 2008



PM150-250-400
150-250 MHz – 400W
Solid State Broadband
High Power Module Amplifier

Dimensions



Power Module Technology • 3107 N. Deer Run Road, Suite 20, Carson City, Nevada 89701 USA.

Tel: +1.775.883.1122 e-mail: sales@pmtrf.com web: <http://www.pmtrf.com>

Specifications contained herein are subject to change without notice.

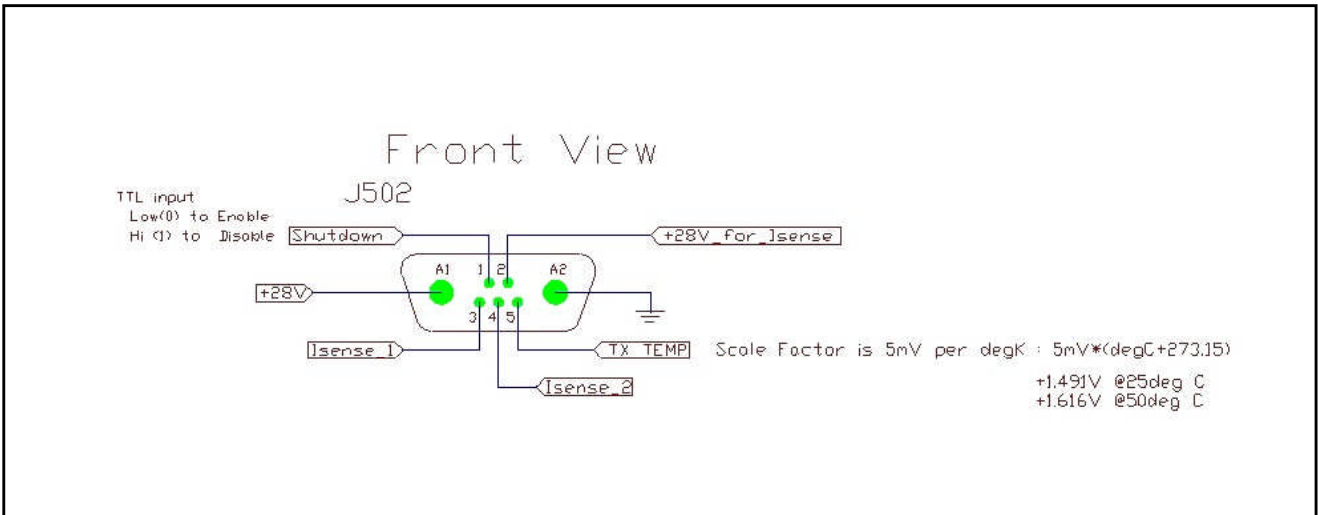
PMT, Inc assumes no liability for the use of this information.

© PMT, Inc 2008



PM150-250-400
150-250 MHz – 400W
Solid State Broadband
High Power Module Amplifier

Connector Pin Out



Power Module Technology • 3107 N. Deer Run Road, Suite 20, Carson City, Nevada 89701 USA.

Tel: +1.775.883.1122 e-mail: sales@pmtrf.com web: <http://www.pmtrf.com>

Specifications contained herein are subject to change without notice.

PMT, Inc assumes no liability for the use of this information.

© PMT, Inc 2008



PM150-250-4000
150-250 MHz – 400W
Solid State Broadband
High Power Module Amplifier

Revision History: 11/18/08

Data Sheet

Added Connector Pin Out 01/05/09

We Listen to your comments

If there is any information within this document that you feel is wrong, unclear or Missing, please give us your feedback as it will help us to continuously improve The quality of this document. Please send your suggestions (including a reference To this document) to:

Bob.Todd@PMTRF.com

To request other information please call 1-775-883-1122

Attention please:

The information herein is given to describe certain components and shall not be Considered as a guarantee of characteristics. Terms of delivery and rights to Technical change reserved.

For further information on technology, delivery terms, conditions and prices, please Contact the sales department at PMT headquarters at 1-775-883-1122

Power Module Technology • 3107 N. Deer Run Road, Suite 20, Carson City, Nevada 89701 USA.

Tel: +1.775.883.1122 e-mail: sales@pmtrf.com web: <http://www.pmtrf.com>

Specifications contained herein are subject to change without notice.

PMT, Inc assumes no liability for the use of this information.

© PMT, Inc 2008